

Columbia River Domain

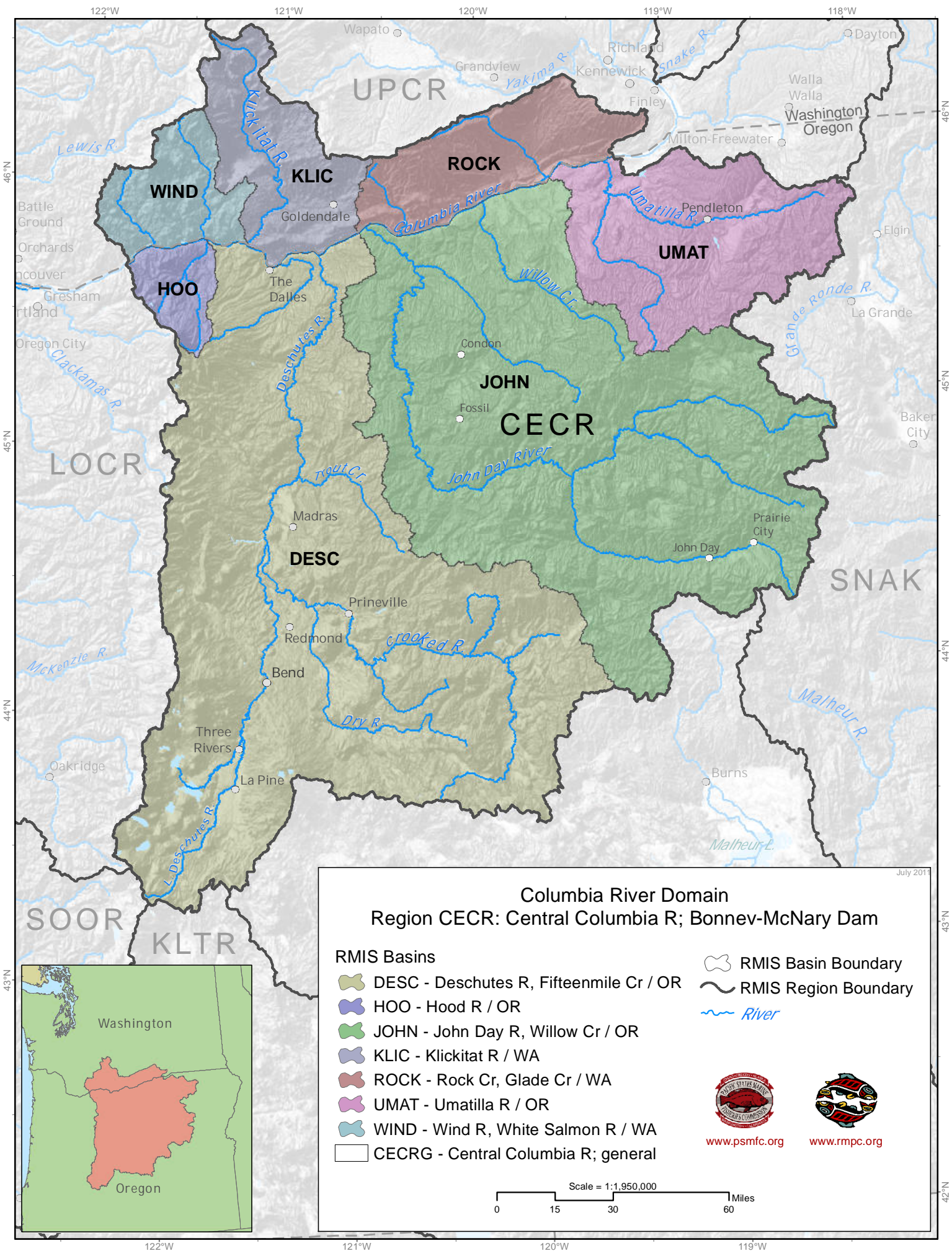
- RMIS Regions**
- CECR - Central Columbia R; Bonneville-McNary Dam
 - LOCR - Lower Columbia R; mouth-Bonneville Dam
 - SNAK - Snake R
 - UPCR - Upper Columbia R; above McNary Dam, excluding Snake R
 - CRGN - Columbia River, general
 - RMIS Basin Boundary
 - RMIS Region Boundary
 - River

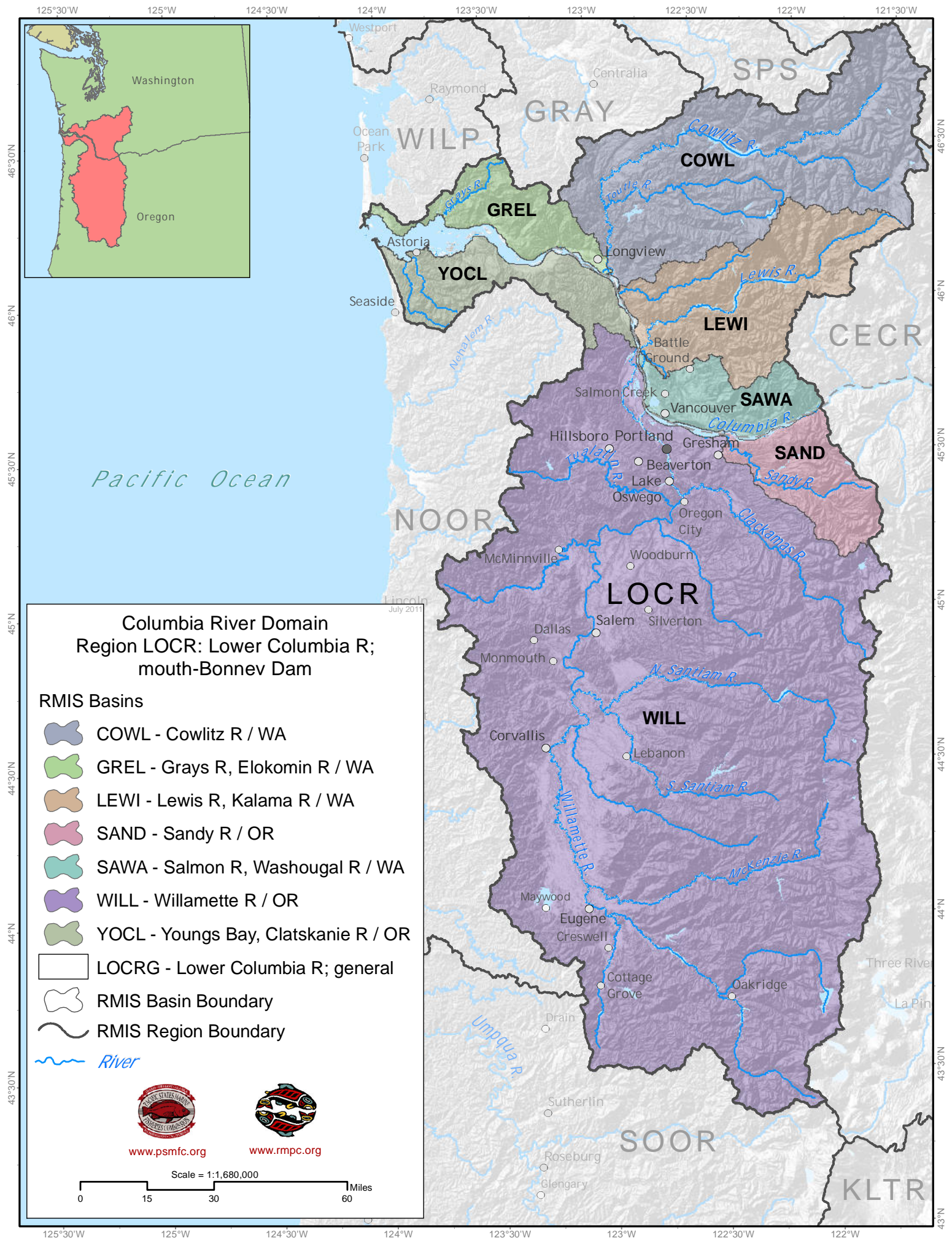
Scale = 1:6,200,000
 0 50 100 200 Miles



www.psmfc.org www.rmfc.org

July 2011





Pacific Ocean

NOOR

NOOR

NOOR

NOOR

NOOR

NOOR

NOOR

NOOR

NOOR

NOOR

GRAY

SPS

WILP

GRAY

COWL

GREL

YOCL

LEWI

CECR

SAWA

SAND

LOCR

WILL

SOOR

KLTR

