

129°W

128°W

127°W

126°W

125°W

54°N

53°N

52°N

51°N

54°N

53°N

52°N

51°N

NOBC

FRTH

CCST

CEBC

RIVR

JNST

WCVI

Kitimat

Kildala Arm

Weewanie

Butedale

Klenlu

Bella Bella

South Bentinck

Oweekeno

Dawsons Landing

Wadhams

Goose Bay

Port Hardy

Port McNe

Port Alice

Kitimat R.

Morice R.

Chelasie R.

St. Thomas R.

Ootsa Lake

Entiako R.

Gambay R.

Kimsquit R.

Ulesyuko R.

Dean R.

Tezwa R.

Killope R.

Corkscrew Cr.

Bella Coola R.

Firvale

Stuie

Atnarko

Towdystan

Kilbucka R.

Shaemahant R.

Machmell R.

Klinalini R.

Mosley Cr.

Queen Charlotte Sound

Pacific Ocean

Strait of Georgia



www.psmfc.org

www.rmpc.org

129°W

128°W






127°W




126°W

125°W

# British Columbia Domain Region FRTH: Fraser R, Thompson R

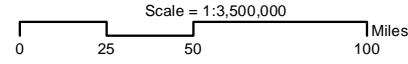
## RMIS Basins

-  LOFR - Lower Fraser R; below Hope
-  LOTR - Lower Thompson R
-  UPFR - Upper Fraser R; above Hope; exc Thompson R
-  UPTR - Upper Thompson R; above Kamloops
-  FRTHG - Fraser R, Thompson R; general

-  RMIS Basin Boundary
-  RMIS Region Boundary
-  River



[www.psmfc.org](http://www.psmfc.org) [www.rmpc.org](http://www.rmpc.org)



NOBC

CEBC

JNST

GST

FRTH

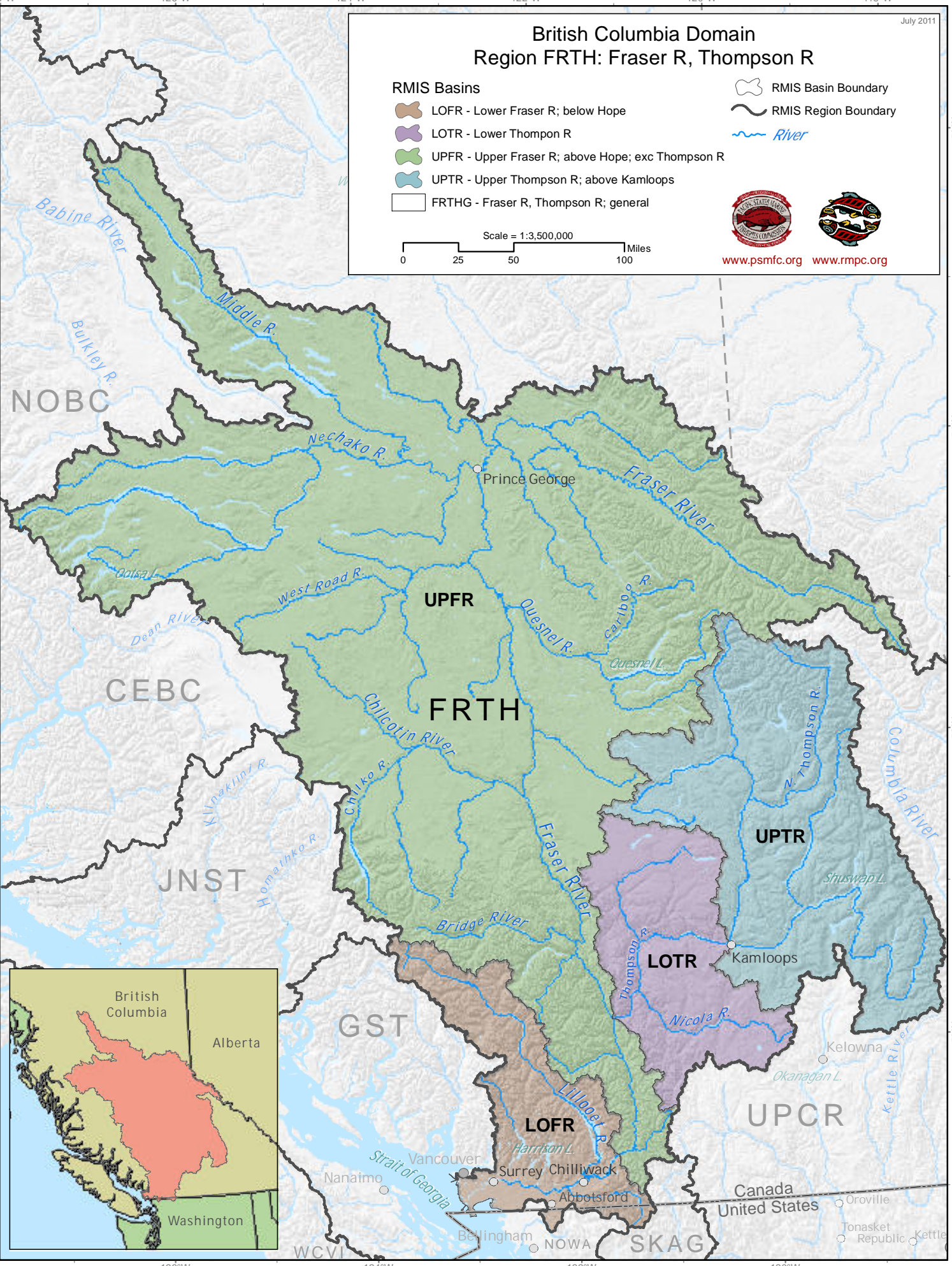
UPFR

UPTR

LOTR

LOFR

UPCR



56°N  
54°N  
52°N  
50°N

56°N  
54°N  
52°N  
50°N

125°30'W 125°W 124°30'W 124°W 123°30'W 123°W

50°30'N

50°N

49°30'N

49°N

48°30'N

48°N

50°30'N

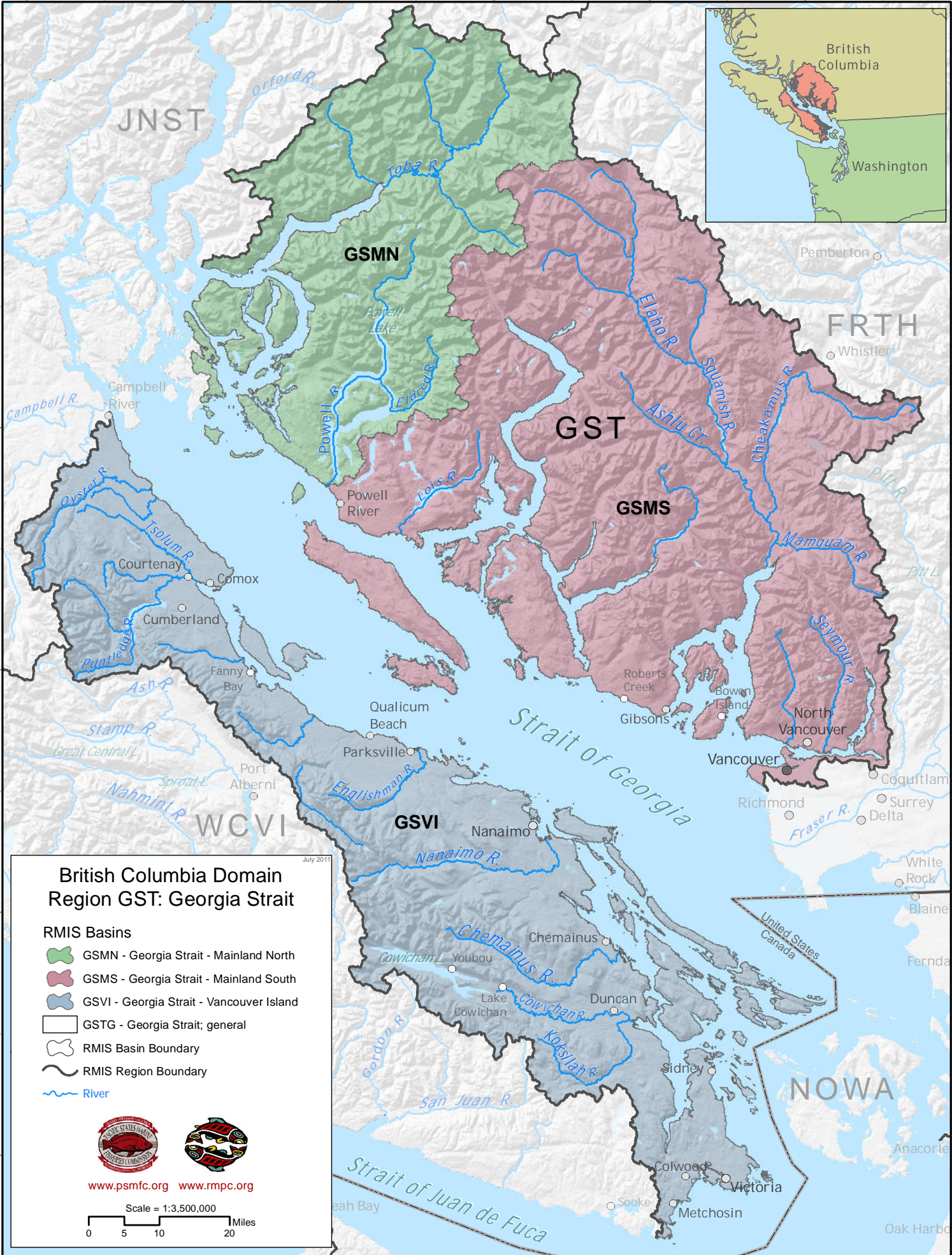
50°N

49°30'N

49°N




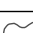



48°30'N

48°N



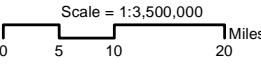
### British Columbia Domain Region GST: Georgia Strait

#### RMIS Basins

-  GSMN - Georgia Strait - Mainland North
-  GSMS - Georgia Strait - Mainland South
-  GSVI - Georgia Strait - Vancouver Island
-  GSTG - Georgia Strait; general
-  RMIS Basin Boundary
-  RMIS Region Boundary
-  River



[www.psmfc.org](http://www.psmfc.org) [www.rmpc.org](http://www.rmpc.org)



125°30'W 125°W 124°30'W 124°W 123°30'W 123°W

# British Columbia Domain Region JNST: Johnstone Strait

July 2011

## RMIS Basins

JSM - Johnstone Strait - Mainland

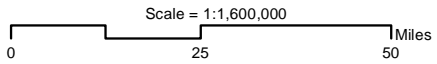
JSVI - Johnstone Strait - Vancouver Island

JNSTG - Johnstone Strait; general

RMIS Basin Boundary

RMIS Region Boundary

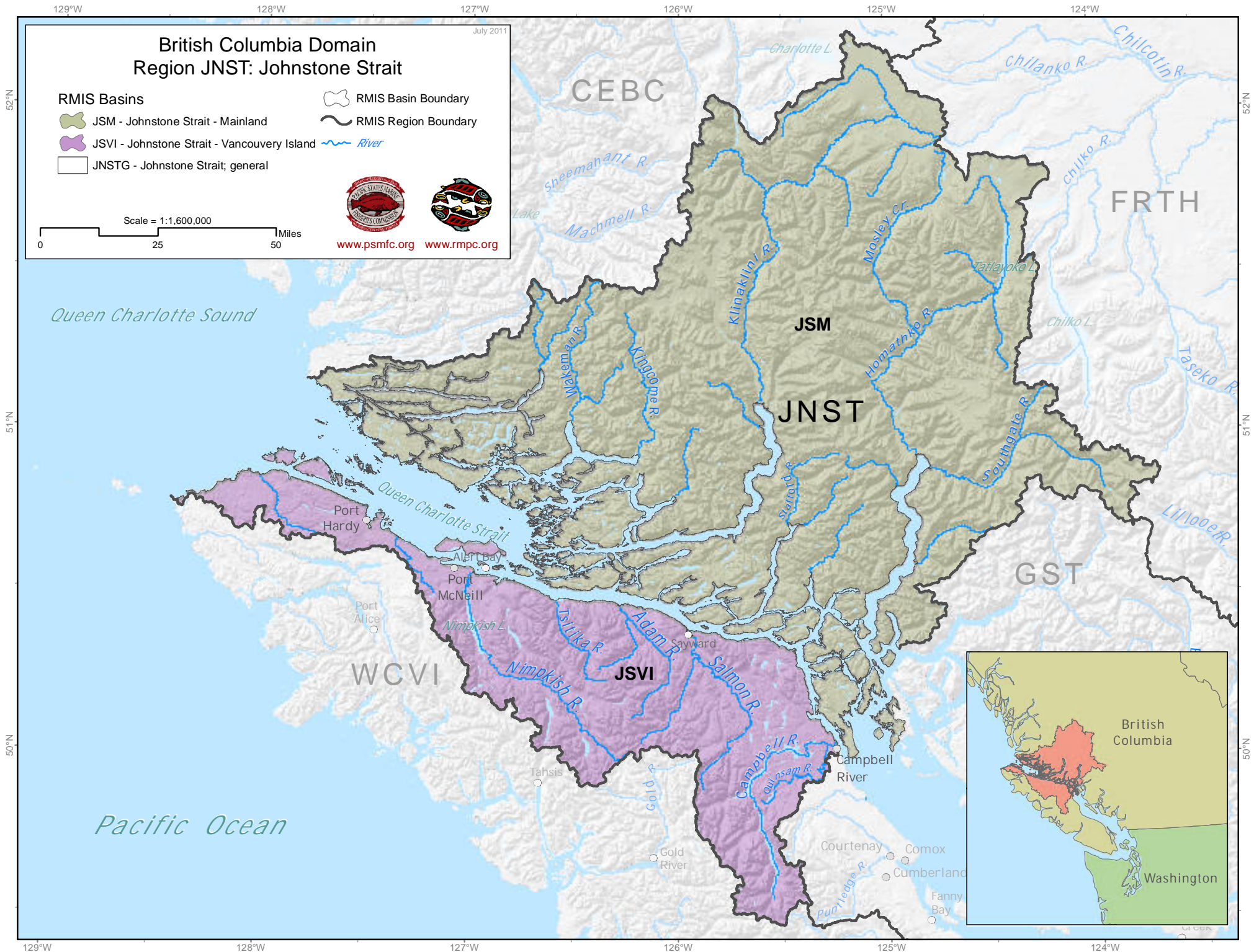
River



[www.psmfc.org](http://www.psmfc.org)



[www.rmpec.org](http://www.rmpec.org)





134°W 133°W 132°W 131°W 130°W 129°W

55°N

54°N

53°N

52°N

51°N

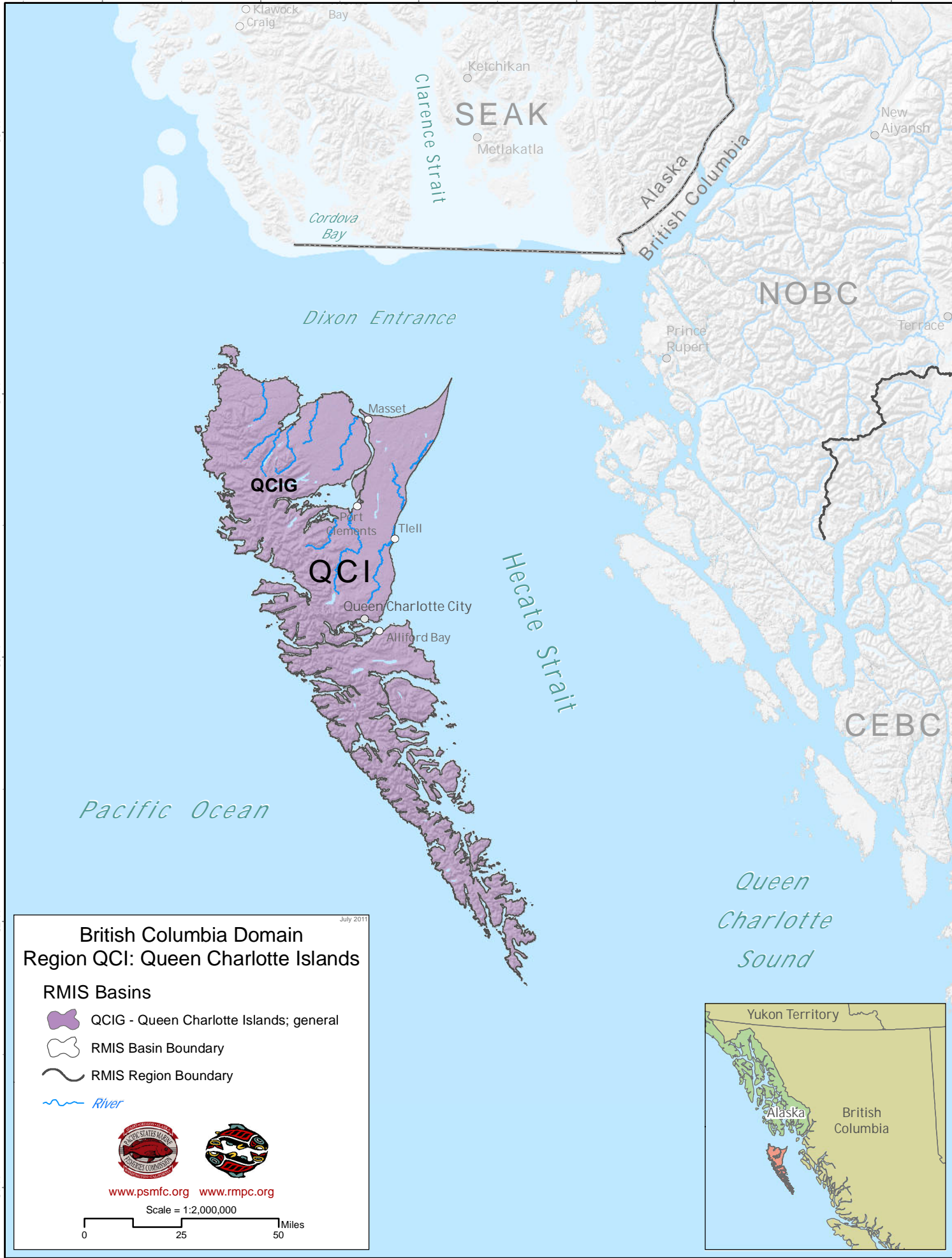
55°N

54°N

53°N

52°N





51°N



**British Columbia Domain  
Region QCI: Queen Charlotte Islands**

July 2011

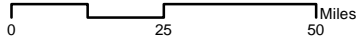
**RMIS Basins**

-  QCIG - Queen Charlotte Islands; general
-  RMIS Basin Boundary
-  RMIS Region Boundary
-  River

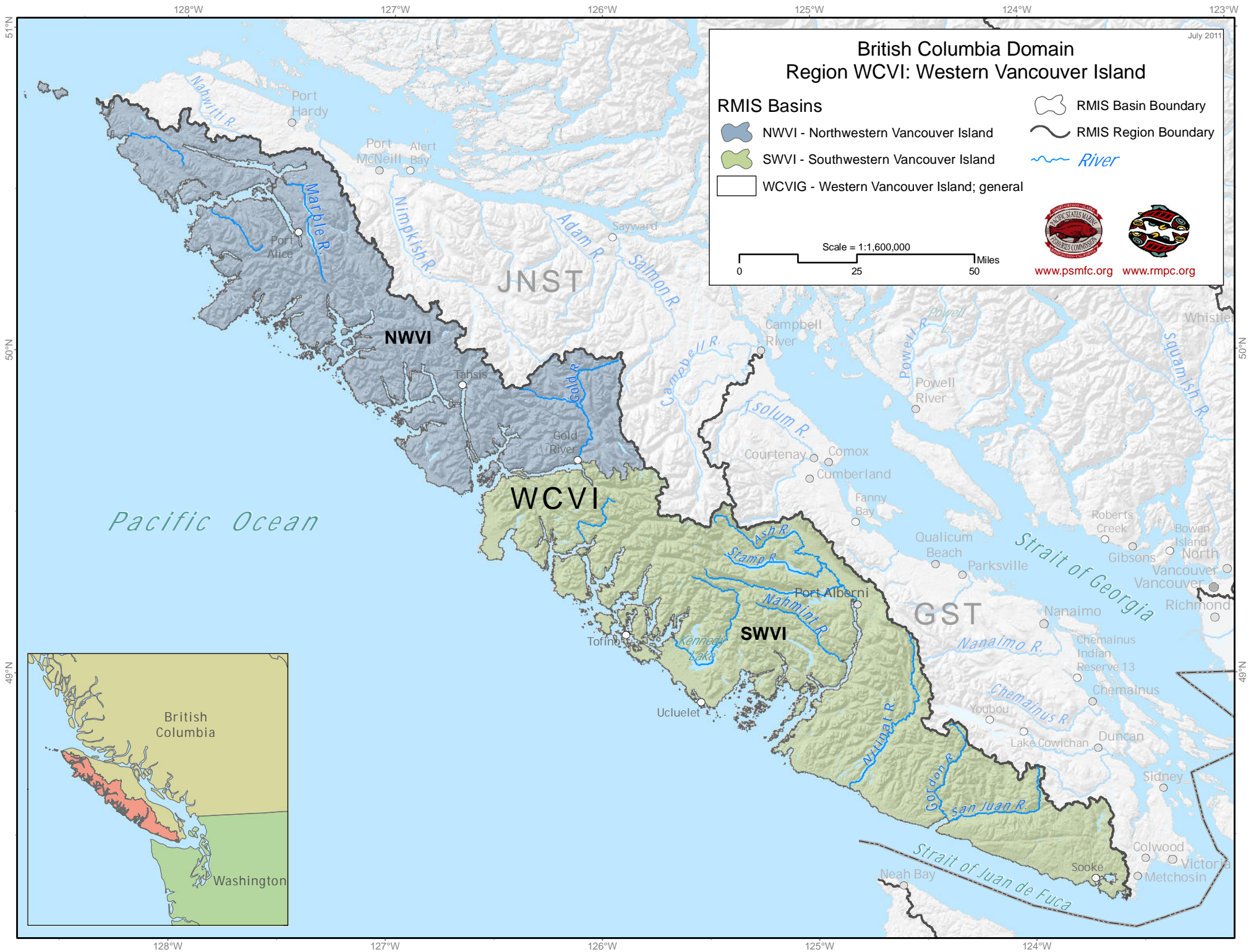


[www.psmfc.org](http://www.psmfc.org) [www.mpc.org](http://www.mpc.org)

Scale = 1:2,000,000



133°W 132°W 131°W 130°W 129°W



# British Columbia Domain Region WCVI: Western Vancouver Island

July 2011

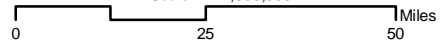
## RMIS Basins

- NWVI - Northwestern Vancouver Island
- SWVI - Southwestern Vancouver Island
- WCVIG - Western Vancouver Island; general
- RMIS Basin Boundary
- RMIS Region Boundary
- River



[www.psmfc.org](http://www.psmfc.org) [www.rmpc.org](http://www.rmpc.org)

Scale = 1:1,600,000



*Pacific Ocean*



128°W 127°W 126°W 125°W 124°W

51°N 50°N 49°N