

DRAFT

1/26/07

To navigate to PSC Domain maps, click on the legend or on the label on the map.

Domain 3: British Columbia

PSC Region

- COBC - Coastal British Columbia
- FRTH - Fraser R - Thompson R
- GST - Georgia Strait
- JNST - Johnstone Strait
- NASK - Nass R - Skeena R
- QCI - Queen Charlotte Islands
- TRAN - Transboundary Rivers in Canada
- WCVI - Western Vancouver Island

City/Town
Major River

Scale = 1:6,750,000

0 30 60 120 180 Miles



January 2007



DRAFT

1/26/07

Domain 3: British Columbia
Region COBC: Coastal British Columbia

PSC Basin

-  CCST - Coastal British Columbia; Central
-  NCST - Coastal British Columbia; North
-  RIVR - Rivers & Smith Inlets

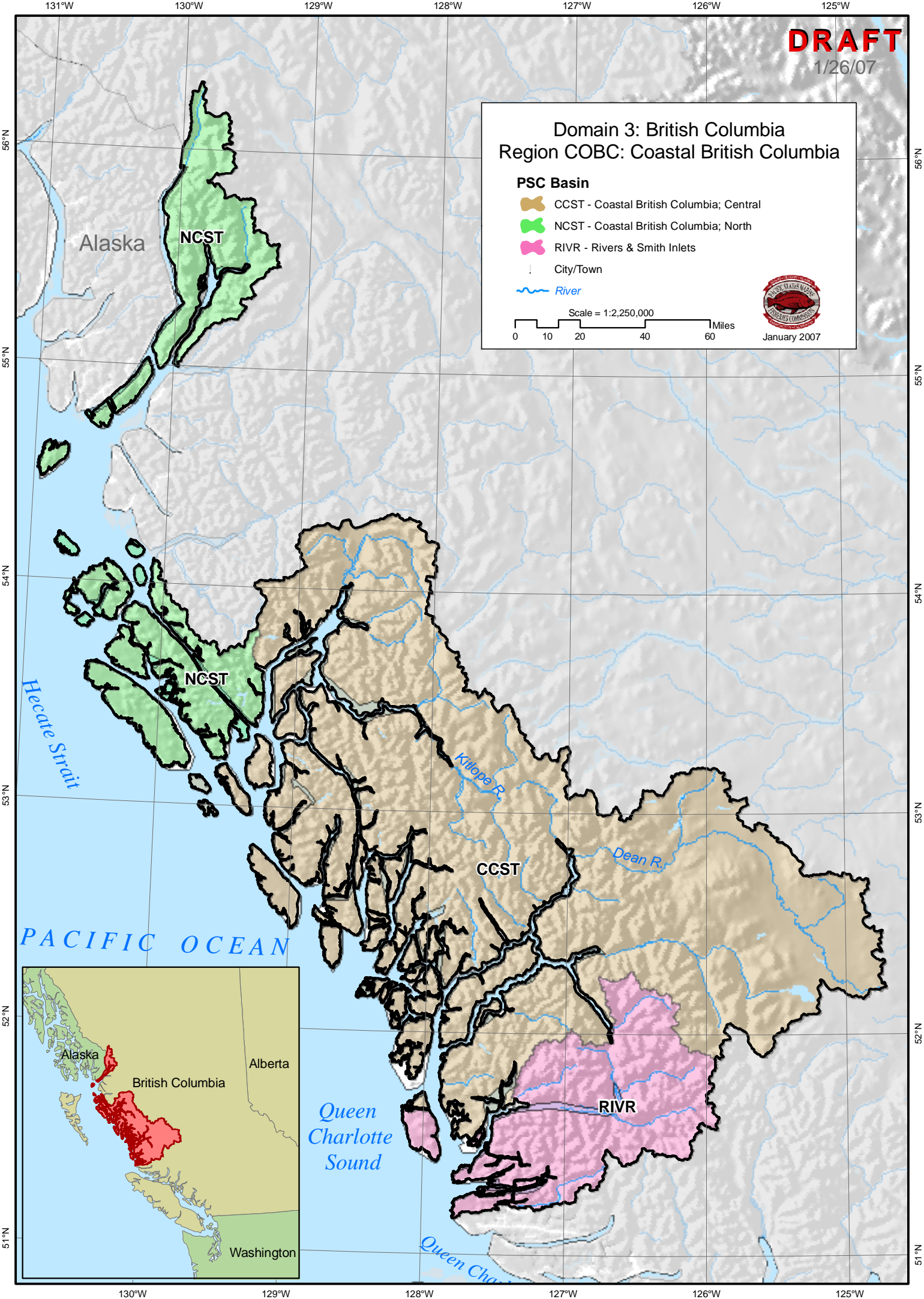
 City/Town

 River

Scale = 1:2,250,000
0 10 20 40 60 Miles



January 2007



DRAFT

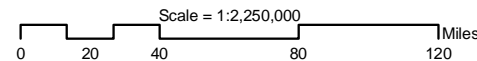
1/26/07

Domain 3: British Columbia
Region FRTH: Fraser River - Thompson River

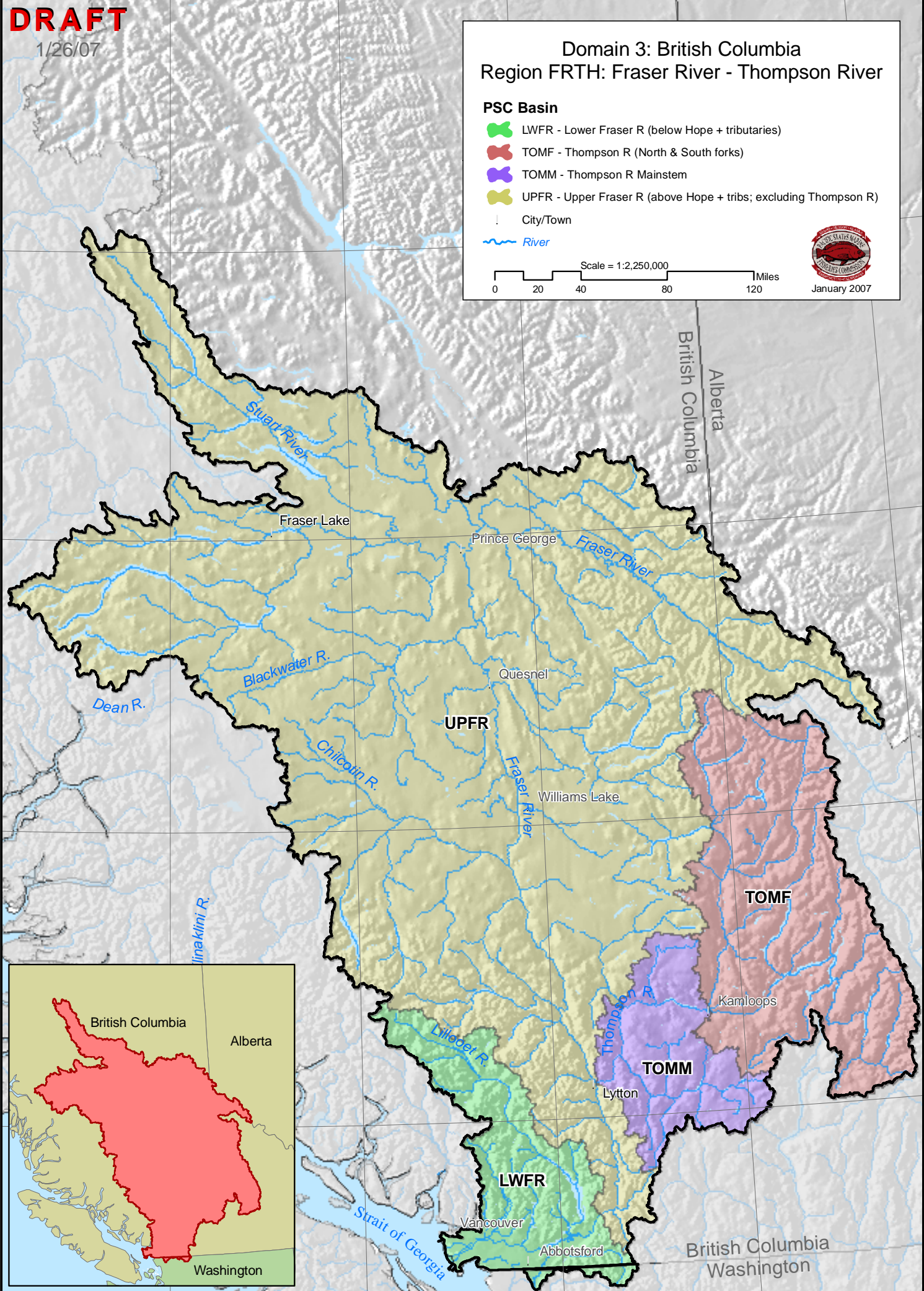
- PSC Basin**
- LWFR - Lower Fraser R (below Hope + tributaries)
 - TOMF - Thompson R (North & South forks)
 - TOMM - Thompson R Mainstem
 - UPFR - Upper Fraser R (above Hope + tribs; excluding Thompson R)

City/Town

River



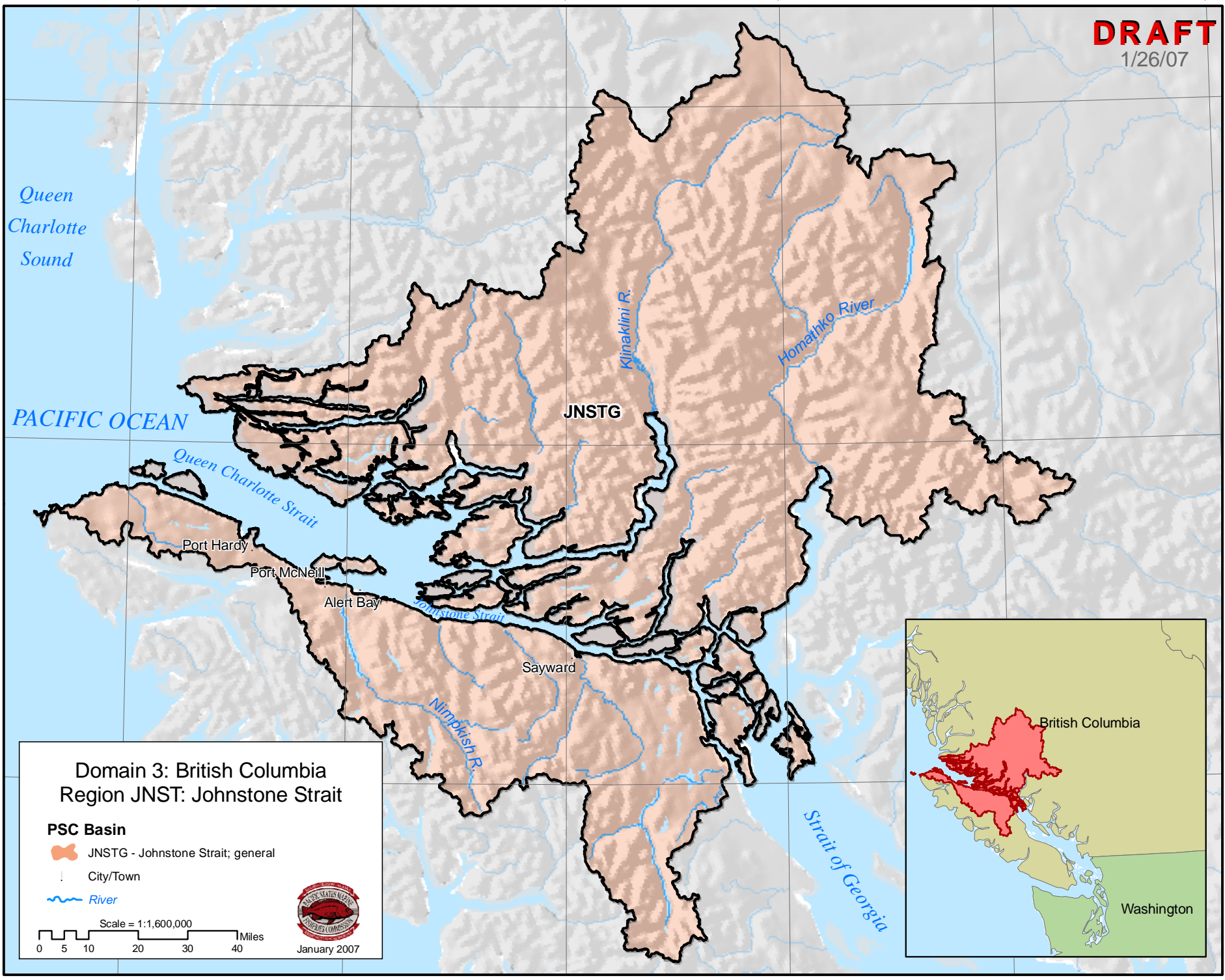
January 2007





DRAFT

1/26/07



Domain 3: British Columbia
Region JNST: Johnstone Strait

PSC Basin

 JNSTG - Johnstone Strait; general

 City/Town

 River

Scale = 1:1,600,000

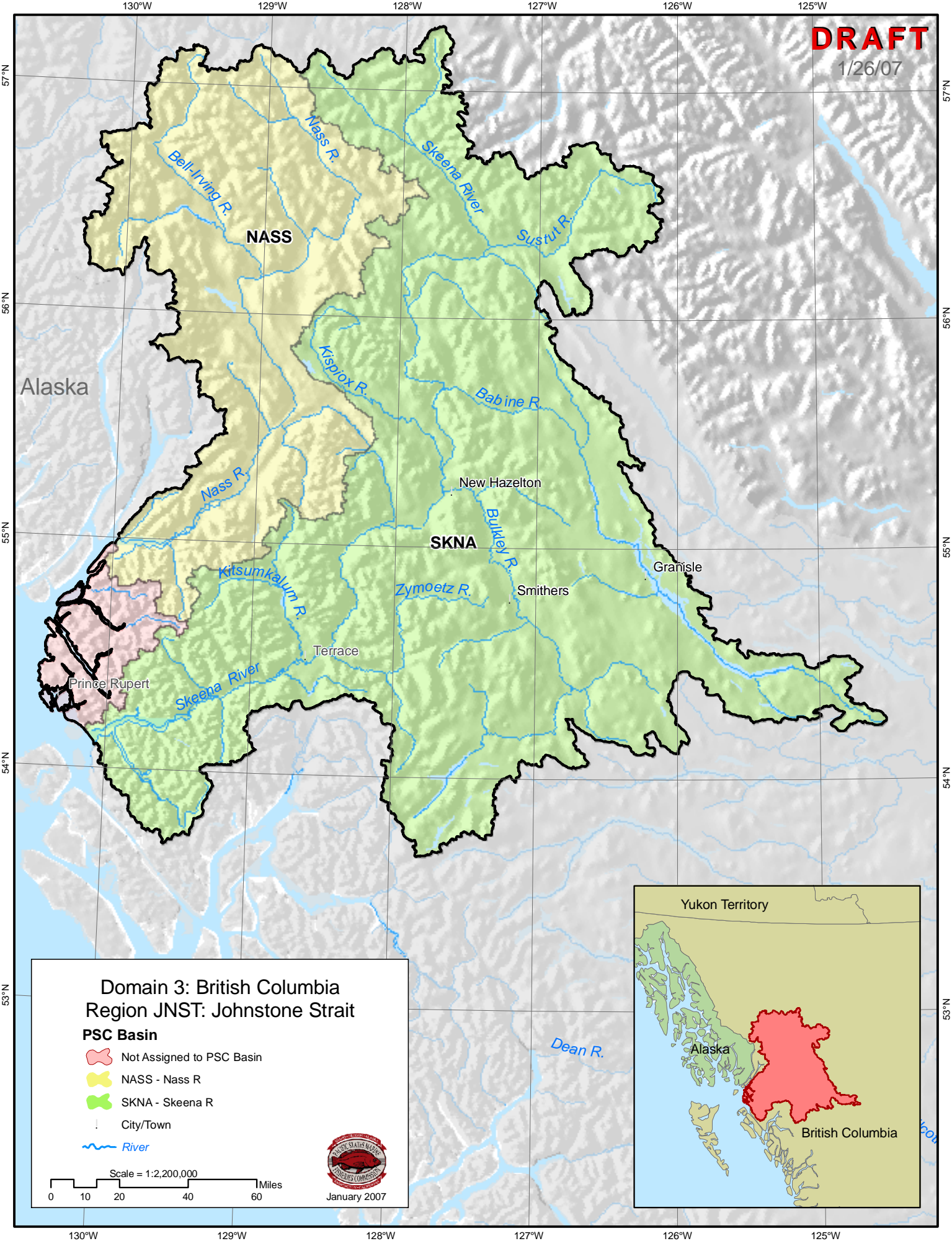
0 5 10 20 30 40 Miles



January 2007

DRAFT

1/26/07



**Domain 3: British Columbia
Region JNST: Johnstone Strait**

PSC Basin

Not Assigned to PSC Basin

NASS - Nass R

SKNA - Skeena R

City/Town

River

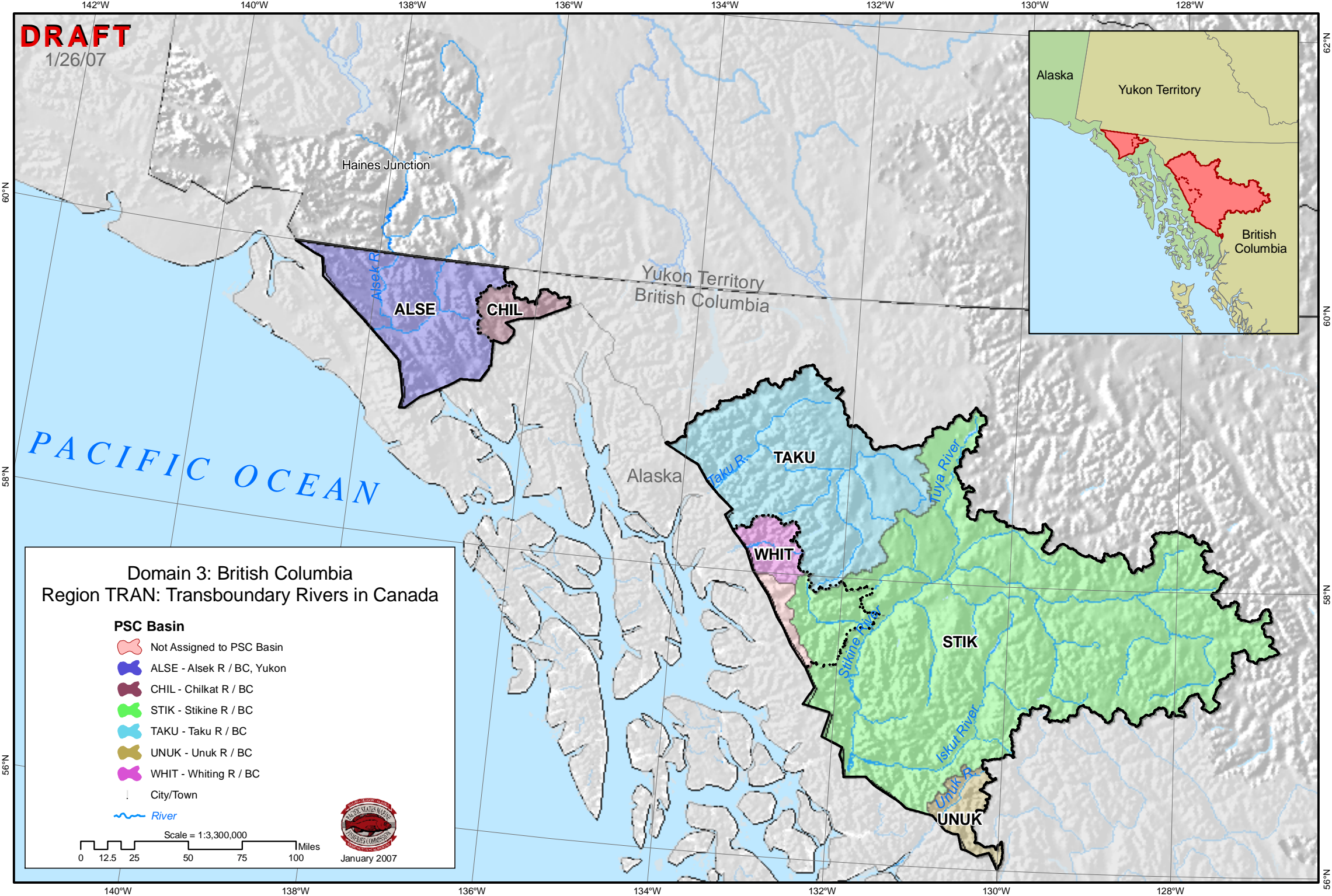
Scale = 1:2,200,000
0 10 20 40 60 Miles





DRAFT

1/26/07



Domain 3: British Columbia
Region WCVI: Western Vancouver Island

PSC Basin

- NWVI - NW Vancouver Island
- SWVI - SW Vancouver Island
- City/Town
- River

Scale = 1:1,500,000
0 5 10 20 30 40 Miles

January 2007

