



North Central Region Mokelumne River 2009 Pulse Flow

By Joe Johnson

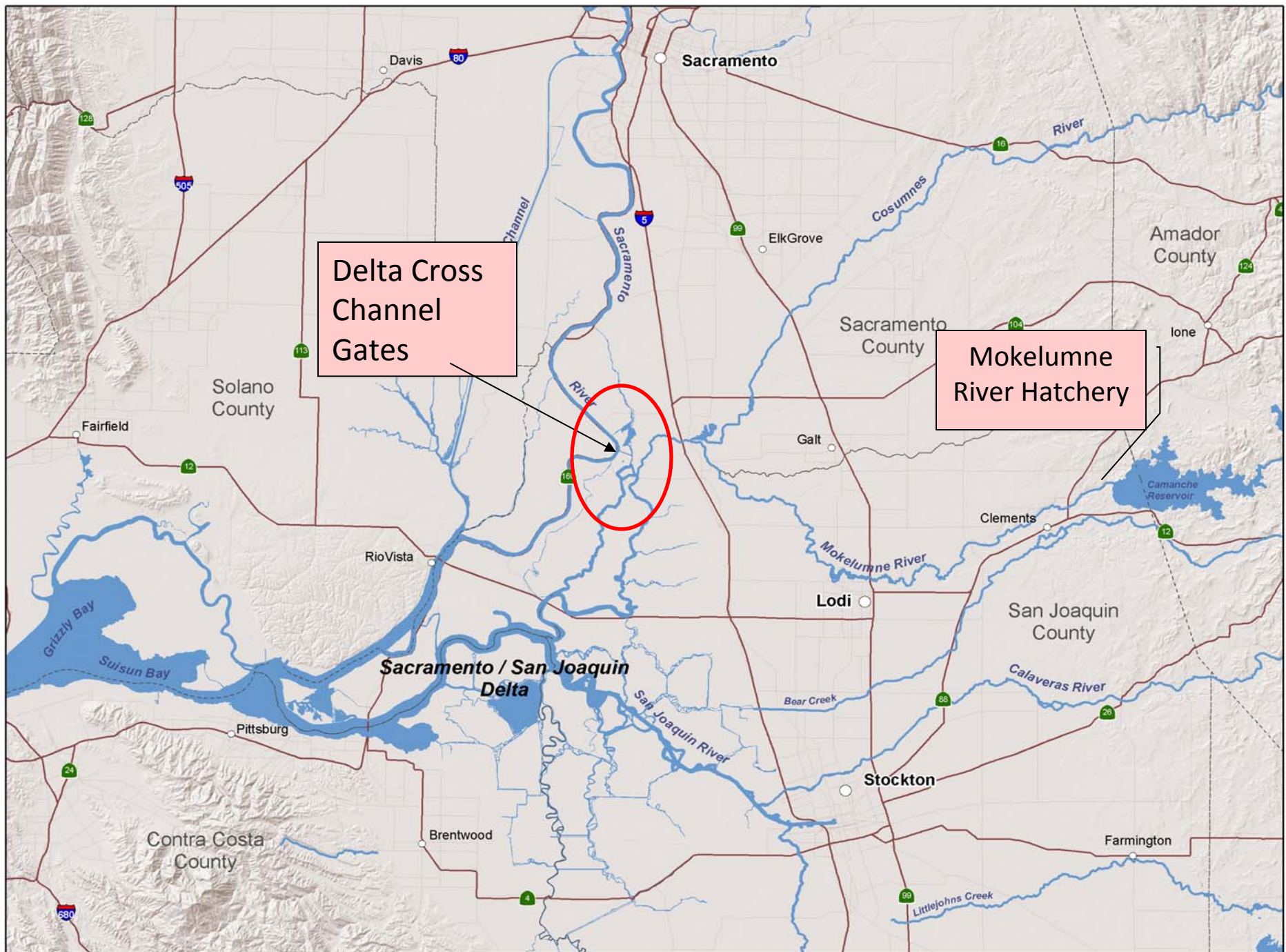
Presentation Outline

- DFG Role
- JSA (Joint Settlement Agreement) Fisheries Management Decisions
- Pulse Flow

- **The goals of the JSA are as follows:**
- **PROVIDE**, to the extent feasible, habitat quality and availability in the lower Mokelumne river to maintain fishery, wildlife and riparian resources in good condition
- **CONTRIBUTE**, towards the state and federal fishery restoration goals as defined in the California Salmon, Steelhead Trout and Anadromous Fisheries Program Act and the Central Valley Project Improvement Act
- **SUSTAIN**, the long-term viability of the salmon and steelhead fishery while protecting the genetic diversity of naturally producing populations in the lower Mokelumne River.

Mokelumne River Hatchery

Year	Hatchery Returns	River Spawners	Total Returns
1989	80	200	280
1990	68	429	497
1991	41	369	410
1992	710	935	1,645
1993	2,164	993	3,157
1994	1,918	1,503	3,421
1995	3,323	2,194	5,517
1996	3,883	4,037	7,920
1997	6,485	3,690	10,175
1998	3,090	4,123	7,213
1999	3,153	2,182	5,335
2000	5,524	1,894	7,418
2001	5,825	1,575	7,400
2002	7,919	2,840	10,759
2003	8,117	2,122	10,239
2004	10,356	1,060	11,416
2005	8,187	7,941	16,128
2006	4,288	1,723	6,011
2007	1,051	470	1,521
2008	239	173	412
2009			



Current DCC Gate Operation

Jan	Feb	Mar	Apr	May	Jun	Jul	Aug	Sep	Oct	Nov	Dec

Proposed DCC Gate Operation

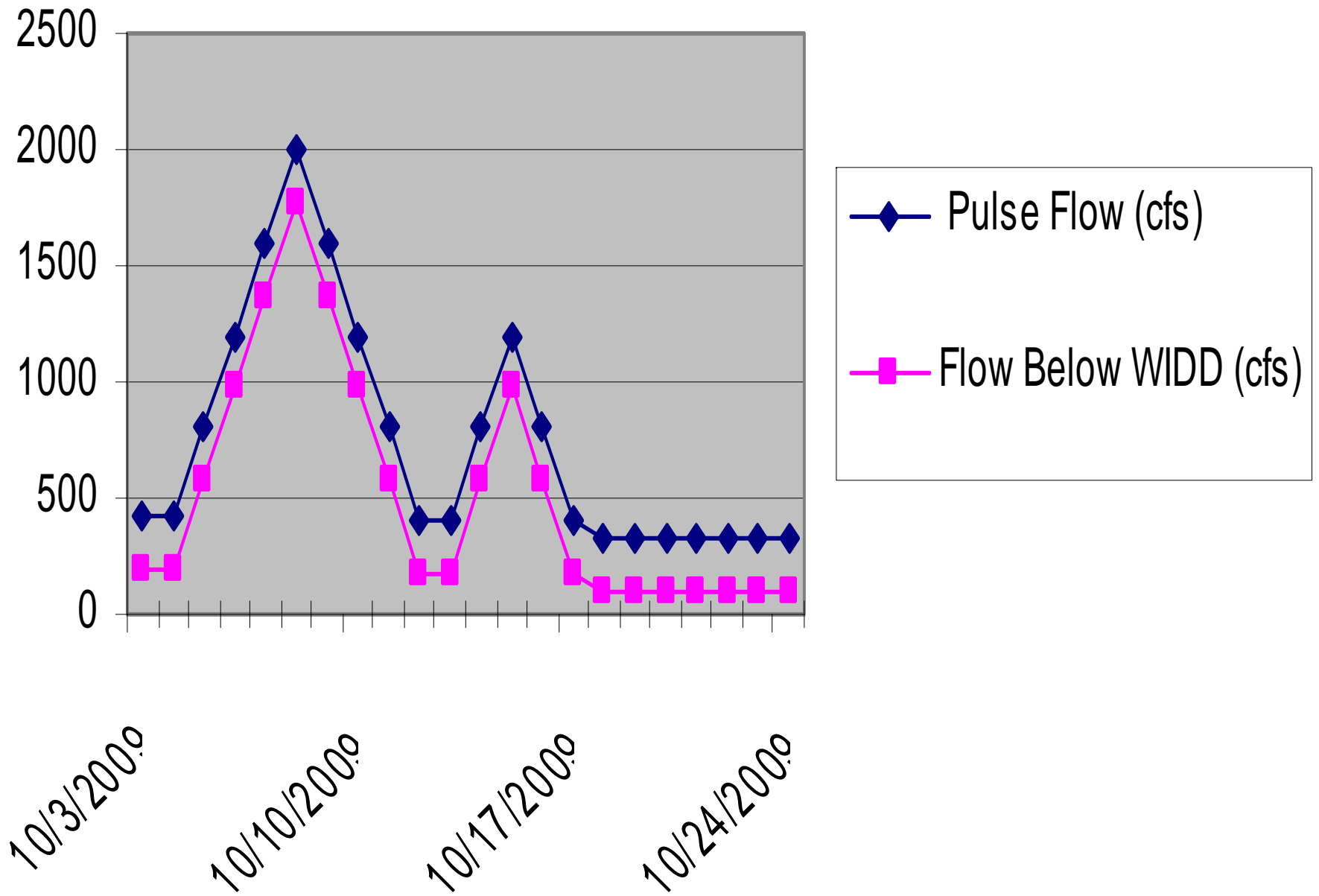
Jan	Feb	Mar	Apr	May	Jun	Jul	Aug	Sep	Oct	Nov	Dec



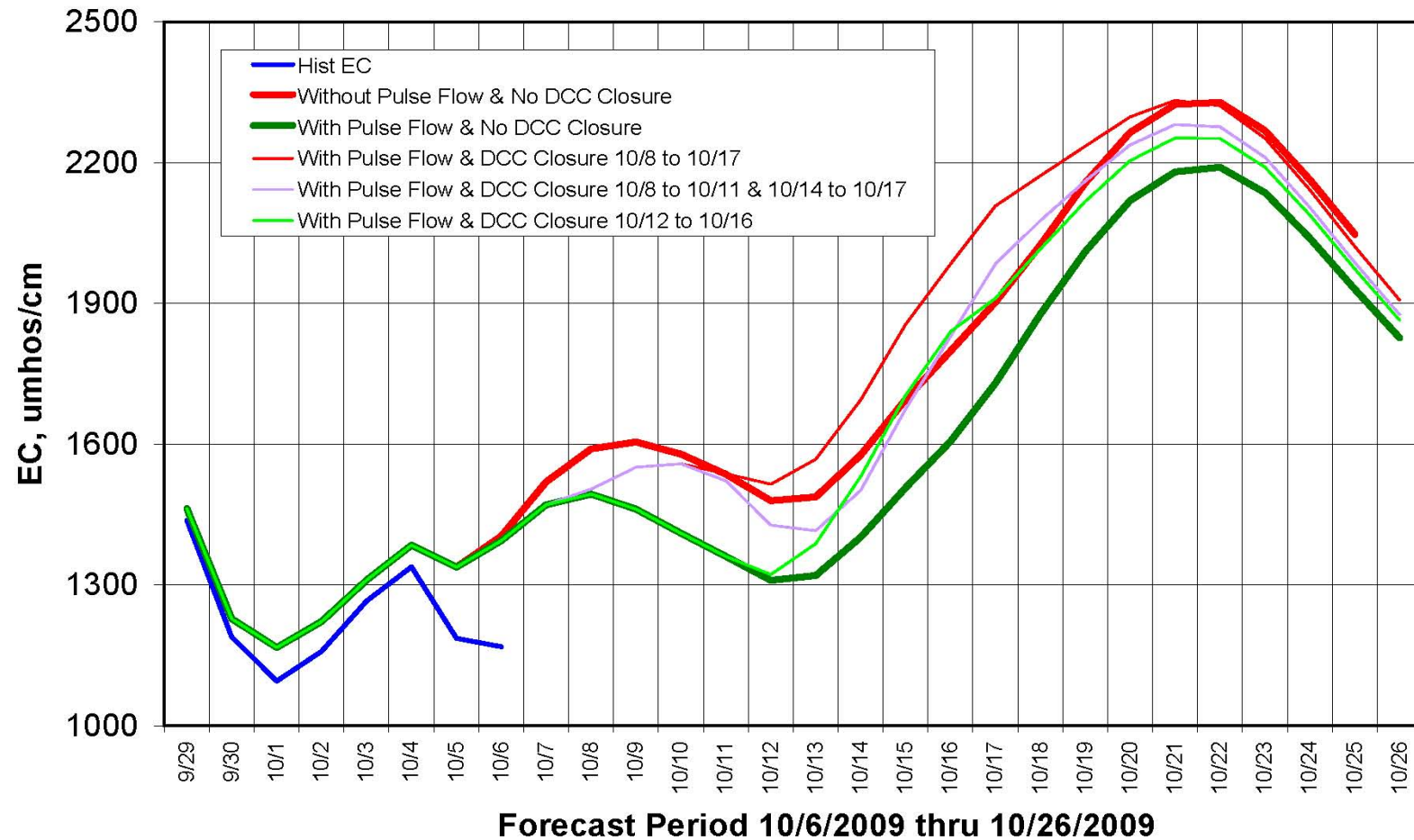
The DCC is closed

The DCC is open

The DCC maybe closed or open

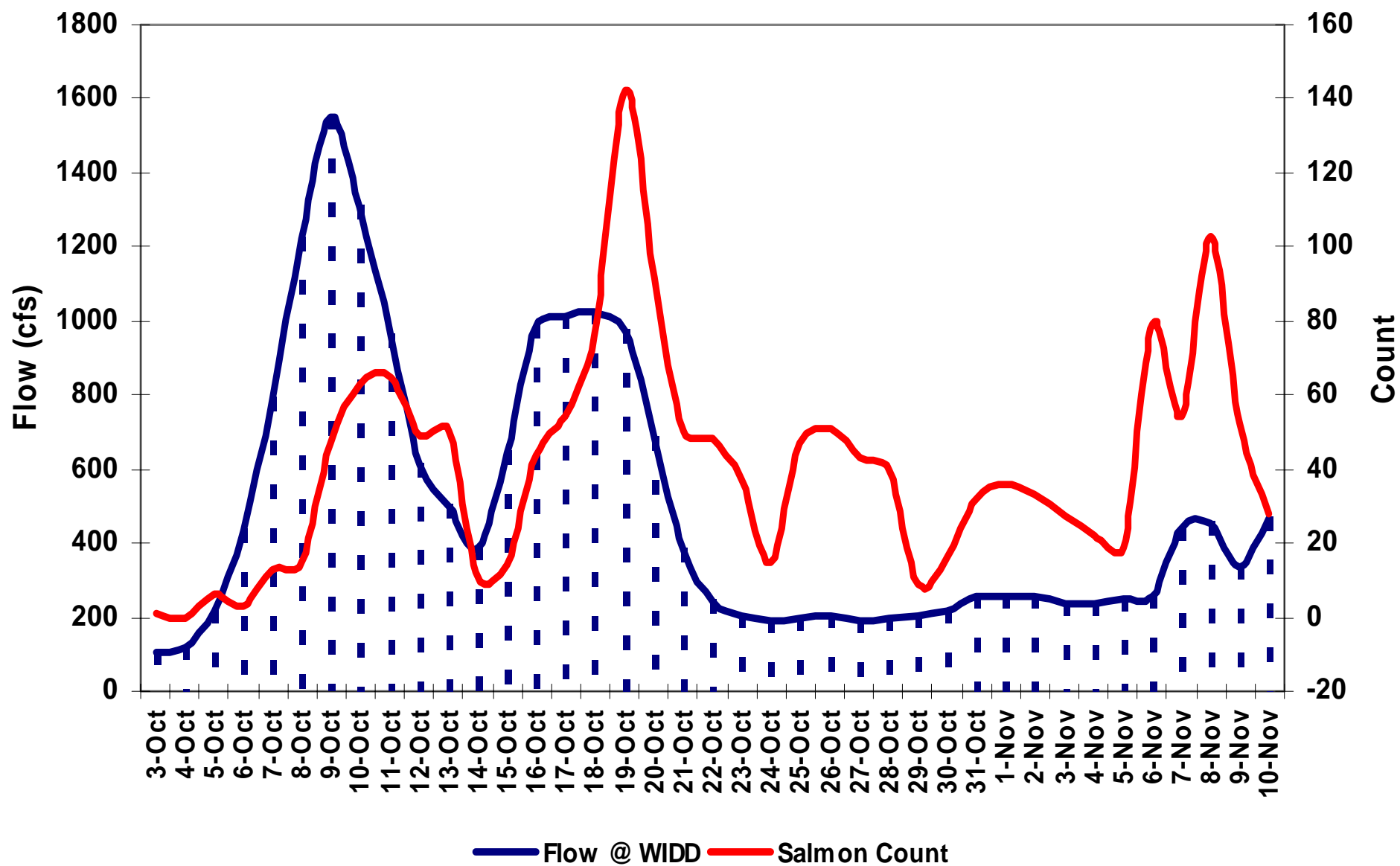


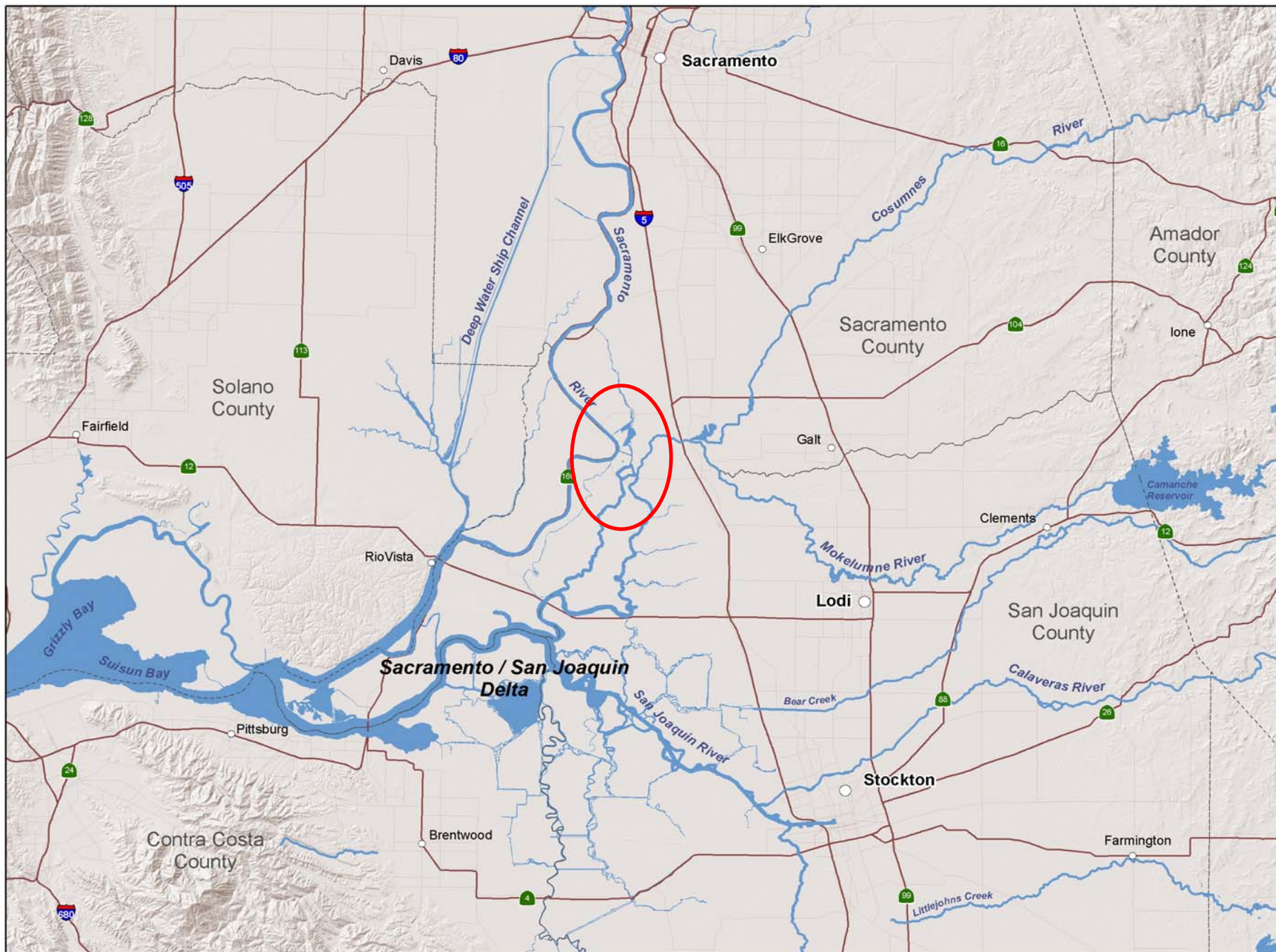
Forecasted Daily EC @ Jersey Point



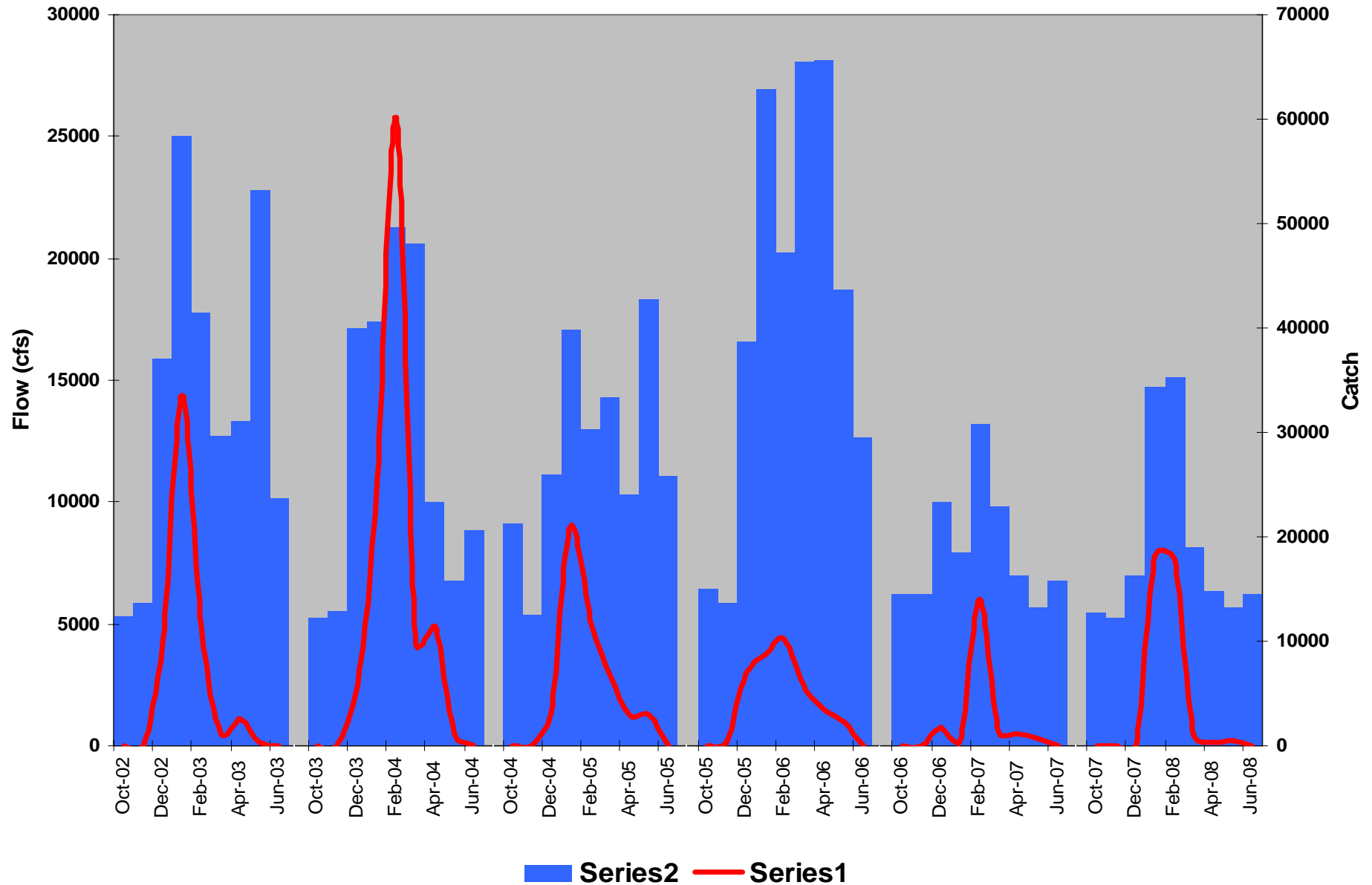
Flow vs Salmon Count at WIDD

October 3 - November 10, 2009





Monthly Flow and Catch At Knights Landing Oct 2002 - April 2008



Scientific Research

- Fish Habitat Surveys
- Fish Surveys
- Water Management
- Invasive Species Surveys

Invasive Species – Quagga Mussels



Thank You

